

INVITATION ONLY
INVITATION ONLY



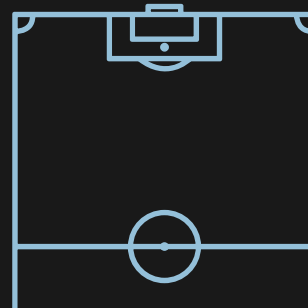
ARIZONA



TOURNAMENT



**RESPECT, HUMILITY,
EFFORT & TEAM WORK**



Start date 6-8th December, 2024

DATE / LOCATION

DEC, 2025

ARIZONA

In December 2025 , we'll be traveling for a unique experience to Arizona, USA and see first hand how the players are being developed. This tournament will be a great chance for the players to earn a spot on the next huge travel team opportunity to participate in the P2P Holland Travel Team in March 2025!!



**LET'S GO
LET'S GO**



The Open Tournament is organized by Legends FC Arizona, and it will take place in Dec. 6th to 8th, 2024. The Open tournament is one of the most prestigious tournaments in the USA, and is a West Coast Premier SuperCopa and SuperCopa+ qualifier. The tournament winning team will be qualified to join THE PREMIER SUPERCOPA TOURNAMENT.



LEGENDS FC
ARIZONA ★ ★ ★ ★

PRICES

2012, GEAR PRICE (\$350 CAD) IS NOT INCLUDED

Tournament Fee	\$125.00
Hotel	\$225.00
Meal	\$200.00
Charter Bus	\$300.00
Coaching Fee	\$305.00
Training Fee	\$985.00
Insurance	\$50.00

PRICES

2013-2014-2015, GEAR PRICE (\$350 CAD) IS NOT INCLUDED

Tournament Fee	\$125.00
Hotel	\$900.00
Meal	\$200.00
Charter Bus	\$300.00
Coaching Fee	\$305.00
Training Fee	\$985.00
Insurance	\$50.00

CANCELLATION POLICY

Cancellation must be notified in writing, prior to the start of the tournament.

The day that the notification is received by Path To Pro Football Academy is the effective cancellation date.

A refund will be considered only upon receipt of an official doctor's letter or other proof of documentation stating that you have an emergency condition that prevents you from participating. We do not grant refunds without an explanation, as it is imperative to safeguard the integrity of our program.

- 105 days before the tournament starts; 100% of the total payment amount may be refunded.
- 104 days and 60 days before the tournament starts, 50% of the total payment amount may be refunded.
- 59 days before the tournament starts, until the end of the tournament, No refund.

In case a participant cancellation is due to transport delays, strikes or force major, No refund.

Please note that these conditions might be subject to change.

WHAT IS INCLUDED

- Tournament Fee
- Hotel: Dec. 5th - 7th
- 2008, 2011, 2012 Boy's team and 2011, 2012 Girl's team
Up to 4 players will share a room without guardian
- 2014, 2015 Boy's team and 2013 Girl's team
Require staying with at least one guardian *Up to 4 guests
- Meal: Breakfast, Lunch, Dinner
- Game-Day Transportation: Players only
- Coaching Fee
- Training Fee: Twice a week from Sep. to Dec. (last day: Dec.1st)

WHAT IS EXCLUDED

- Airfare: We are not intending to arrange a Group Flight. Each family is responsible to book your flights. All players must arrive in Scottsdale, Arizona by December 5th to participate in the tournament.
- Game-Day Transportation for spectators
- Airport Transportation
- Accommodation for the family of the 2008, 2011, 2012 travel team. Families must book their accommodation at a different location than where the P2P group will stay, except for accompanied guest(s) who are required to stay with their child(ren) of the 2013, 2014, 2015 travel team.
- Meal package is only for travel team players. (Breakfast is included for the accompanied guest(s) of the 2013, 2014, 2015 travel team).
- Personal extras.

TERMS AND CONDITIONS

1 ————— **2**

Our terms and conditions can
be found on our website

www.pathtoprofootball.com

Or under the link:

[Path To Pro Football Academy Team
Cancellation Policy](#)

4 ————— **3**

Email:

operations@pathtoprofootball.com



<https://instagram.com/pathtoprofootball>



SCAN ME

